



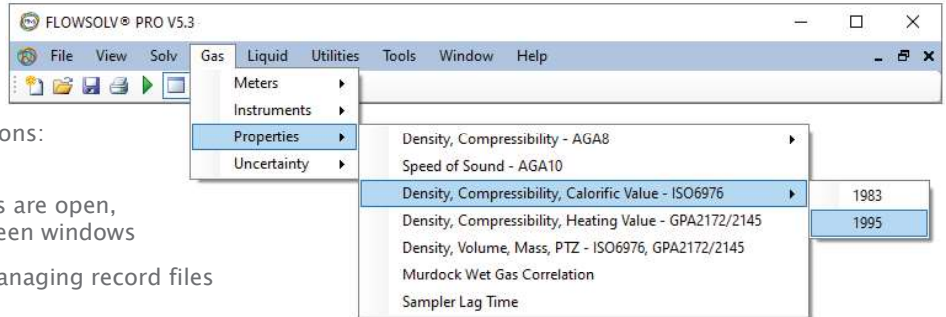
#### STARTING FLOW SOLV® v5.3 PRO

Double Click the FLOW SOLV® V5.3 PRO icon on the desktop to start the program. If you cannot locate the icon on the desktop then open FLOW SOLV® V5.3 PRO from: 'Start, All Programs, FLOW SOLV® V5.3'

#### THE WORKSPACE

##### THE MENU BAR

All FLOW SOLV® V5.3 PRO calculations and operations may be selected using the menu bar and drop-down menus



Calculations are arranged under four sections: Gas, Liquid, Utilities and Tools

When a number of the calculation windows are open, the menu bar may be used to switch between windows

The menu bar also contains options for managing record files and calculation windows

#### THE TOOLBAR

The most efficient way of navigating through FLOW SOLV® V5.3 PRO is with the toolbar



#### LOADING A CALCULATION DATA FILE

Click on the symbol on the toolbar, or click on 'File' then 'Open' on the menu bar. The Open File dialog box will open to allow you to navigate the directories and select a data file, of the type FLOW SOLV Project File (.FSPV). To load the data file, select the file name and select the 'Open' button

#### SAVING A CALCULATION DATA FILE

Click on the symbol on the toolbar, or click on 'File' then 'Save' on the menu bar. The Save File dialog box will open to allow you to navigate the directories and save a data file, of the type FLOW SOLV Project File (.FSPV). To save the data file, name the file and select the 'Save' button

You can also add calculation details to the 'Description', 'Ref/Tag' and 'Note' boxes at the top of each calculation

**Gas - Properties - Speed of Sound - AGA10:2003**

<b>Project</b> West of Shetland	<b>Description</b> Fiscal Export	 <a href="http://www.flowsolv.com">www.flowsolv.com</a>
<b>SOLVSet</b> Suilven	<b>Ref/Tag</b> FE0637	
<b>Calc</b> Gas - Speed of Sound AGA10	<b>Note</b> Transducer VoS check	
<b>Modified</b> 16-Apr-2015 <b>Created</b> 07-Apr-2015		

#### PRINTING A CALCULATION DATA FILE

Click on the symbol on the toolbar, or click on 'File' then 'Print' on the menu bar. Select printer from the list, and click 'Print'

#### FEATURES

##### INPUT BOXES

Input boxes show values used in calculations rounded to a resolution that is suitable for the purpose of the display.

If the number in the input box contains more digits after the decimal point full resolution can be displayed by hovering the mouse over the number.

**Plate Buckling (Plastic Limit)**

Max differential pressure DP 2.342e+0

**Uncertainty due to Elastic Bending**

Change in discharge coeff. 0.10062

% Change in discharge coeff. 0.10000615130973692688

Copyright 2020 © SOLV Limited. All rights reserved.





# FLOWSOLV®

oil & gas flow calculation

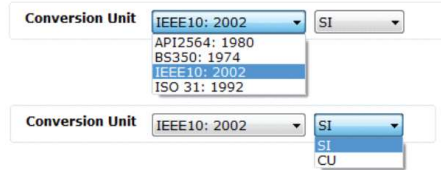
English

## FLOWSOLV® v5.3 PRO GETTING STARTED GUIDE www.flowsolv.com

### FEATURES

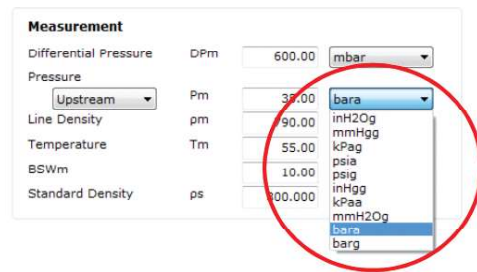
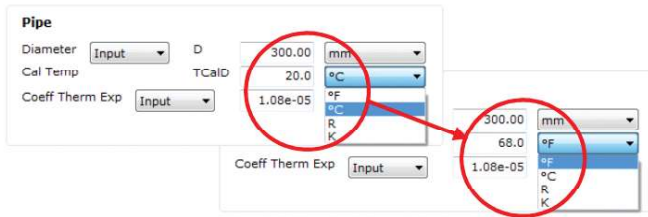
#### ENGINEERING UNITS

Unit conversions rigorously traceable to International Standards



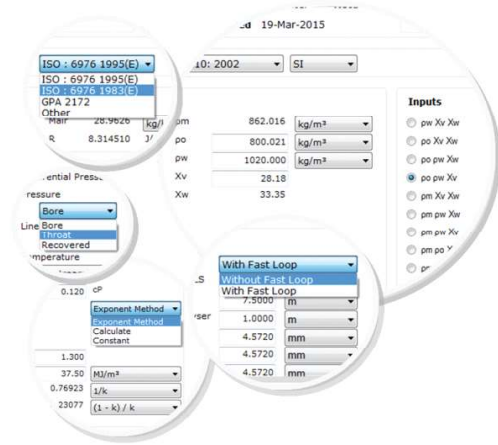
SI (International System of Units, Metric) or CU (Customary Units, Imperial)

A wide choice of engineering units allows you to take readings in whatever units are used by the instrumentation, without the need for manual conversion before calculation. In this way the traceability of the calculation results is maintained and there is an auditable path from input to calculation result.

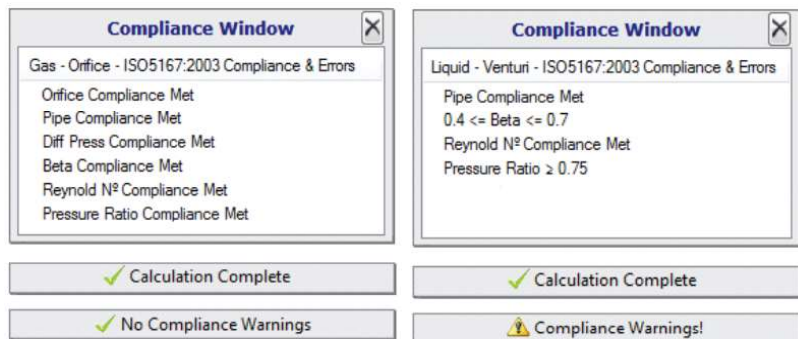


### CALCULATION OPTIONS

Most calculation pages have a choice of calculation methods for maximum flexibility.



### COMPLIANCE CHECKING



FLOWSOLV® V5.2 PRO methods check all inputs and outputs against standards, any non-compliances are identified

Copyright 2020 © SOLV Limited. All rights reserved.



Glenafton House  
Albyn Drive, Corpach  
Fort William  
Scotland, UK  
PH33 7LW

Phone: +44(0) 1397 773190  
Mobile: +44(0) 7884 314401  
Email: info@solv.net  
information@flowsolv.com  
Internet: www.solv.net

Registered Office  
Glenafton House, Albyn Drive,  
Corpach, Fort William, PH33 7LW  
Registered in Scotland No SC255450  
Doc. SD000093 201120